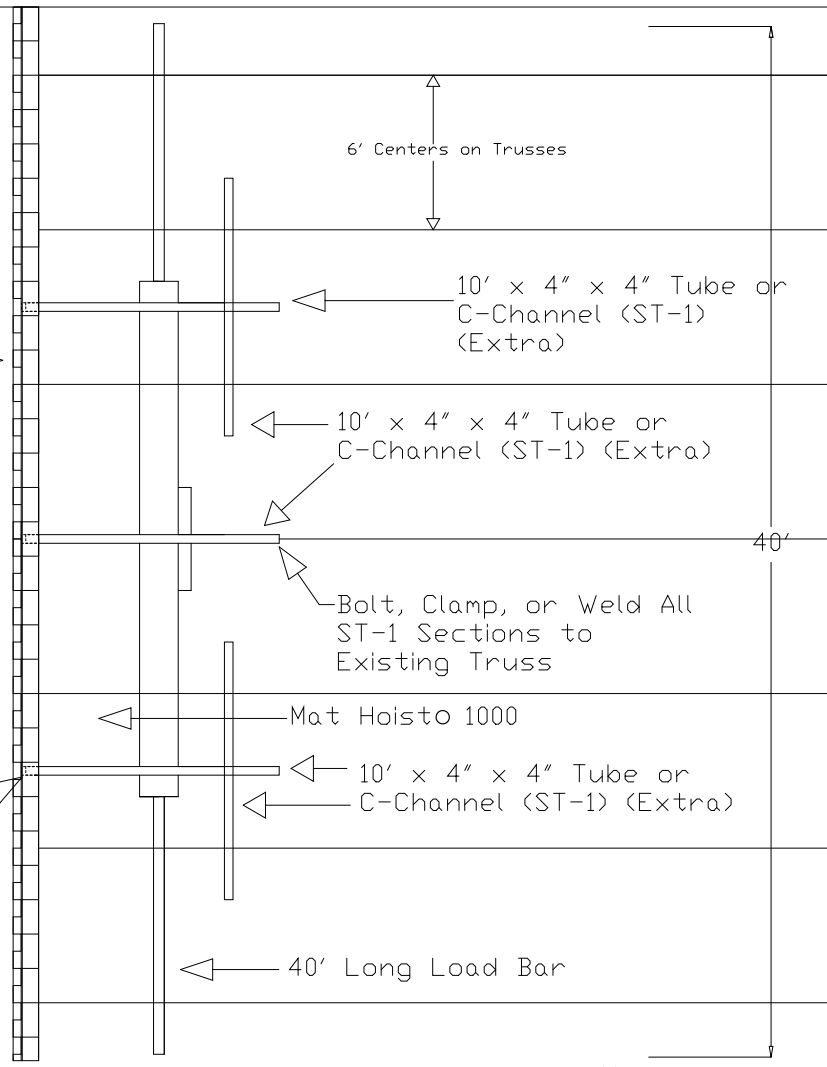


17,500 lbs. Safety  
Certified Load Tested

Existing Concrete Block  
Wall with  $\frac{1}{2}$ " Weep Gap and  
Brick Face

Note: Illustration using  
5 truss, and 5 ST-1  
with two ST-1 as cross  
steel and three  
embedded into wall.

Tube or C-Channel 6"  
Into Block Wall. Grout  
Cell Four Block Courses  
Beneath Added Steel



Note: Structural Strength of Truss & Wall NOT Responsibility of Mat Hoisto  
Manufacturer.

NGE Inc.  
P.O. Box 370/Industrial Park  
302 North Erickson  
Roland, IA 50236

Mat HoistO 1000  
ST-1 Top View  
Drawing #  
MH1000-19

Phone: (515)-388-4118  
Fax: (515) 388-4340  
Email: mathoist@mathoist.com  
Website: www.mathoist.com